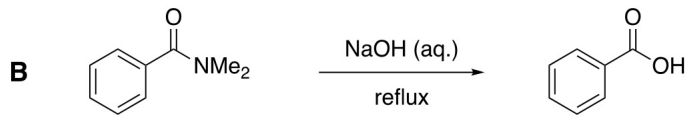
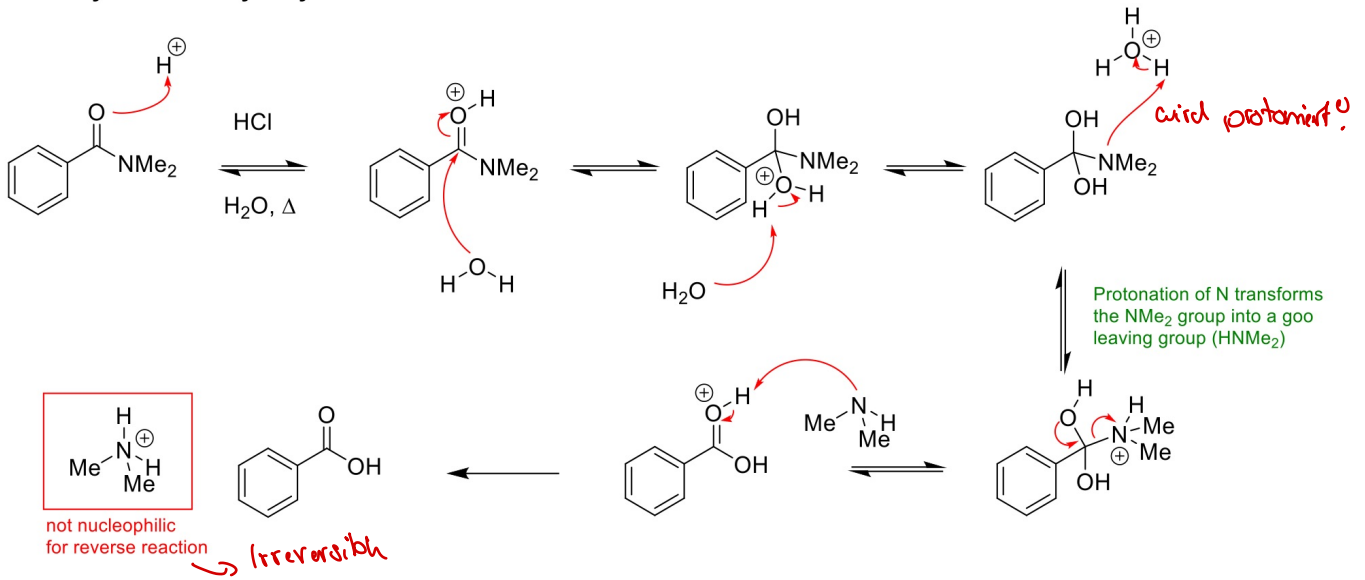
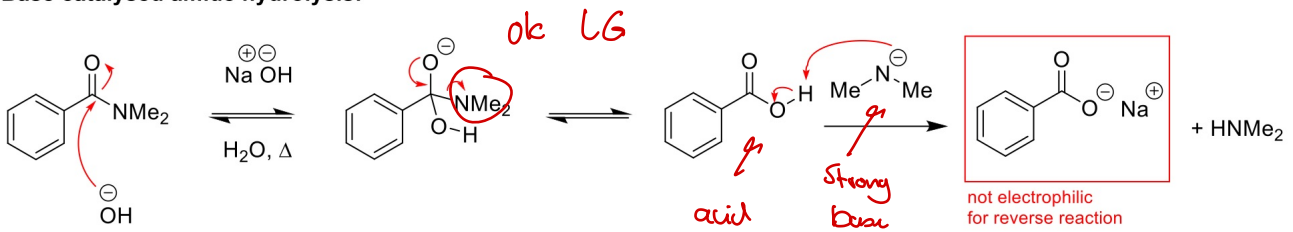


A3

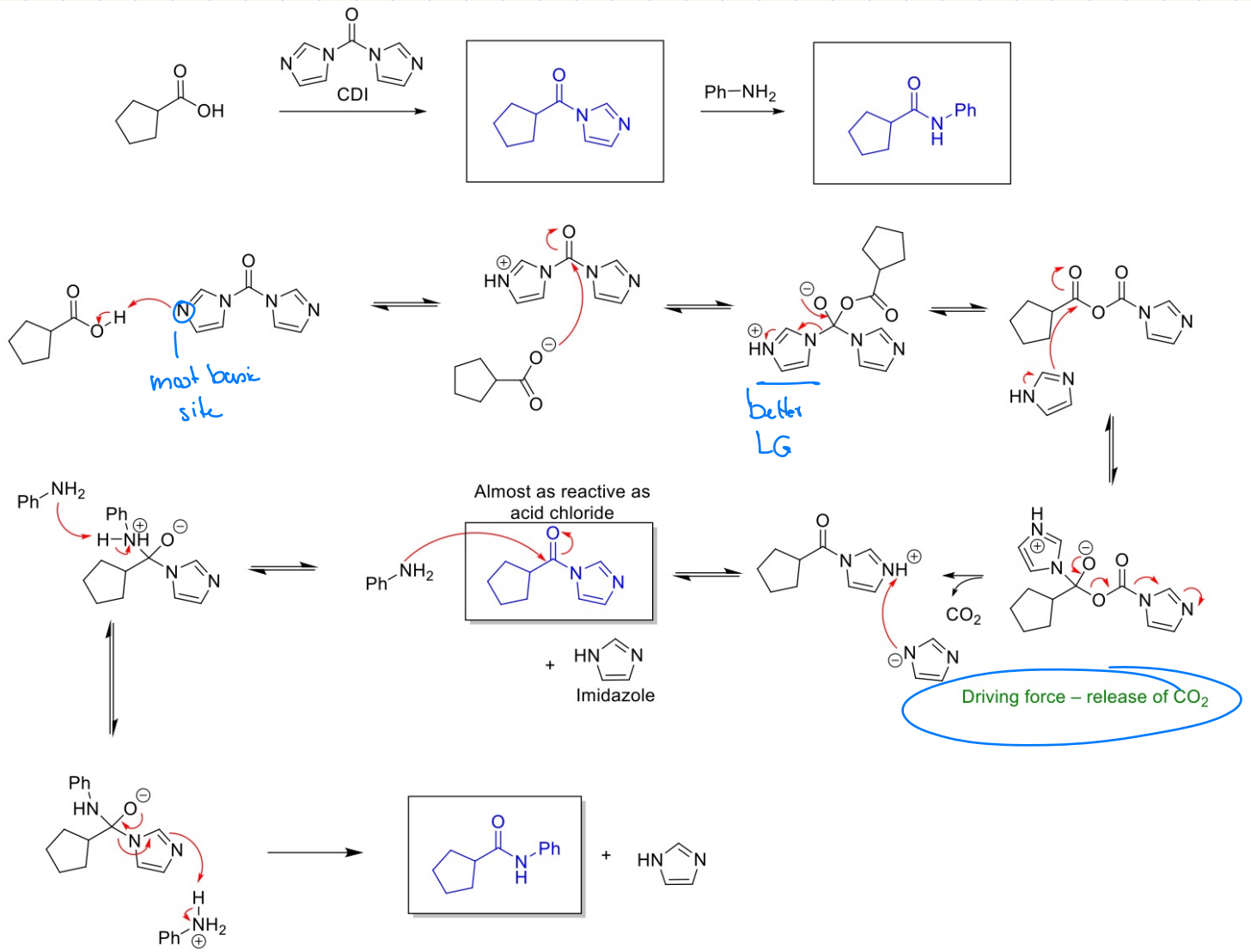
Acid catalysed amide hydrolysis:



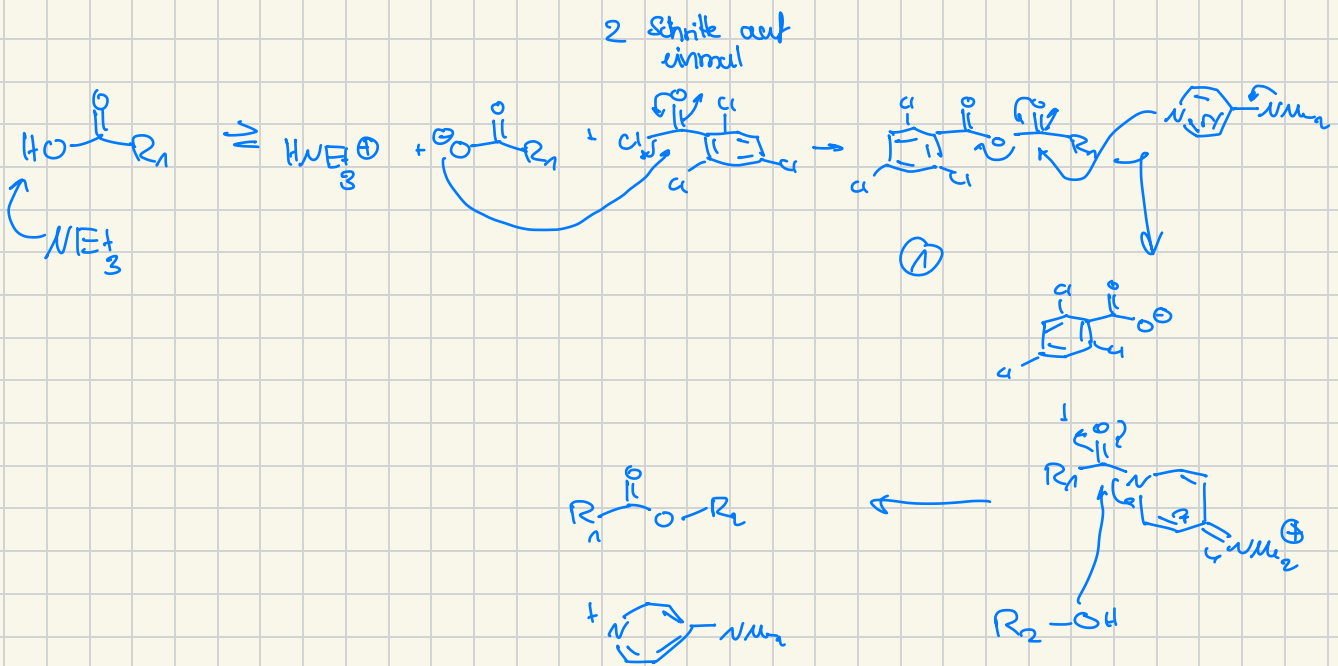
Base catalysed amide hydrolysis:



A5

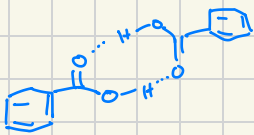


A7



1b)

1)



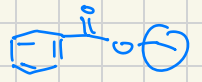
intermolecular H-bonds  
reduce electrophilicity

2)



intramolecular H-bond  
also reduce electrophilicity

3)



Donor

4)



good LG

4) In water acid chlorides are hydrolyzed?

e)

a) F is EWG  $\Rightarrow$  better LG  $2 > 1$

b)  $\text{NO}_2$  very good acceptor  $3 > 4$

$\text{OMe}$  is donor